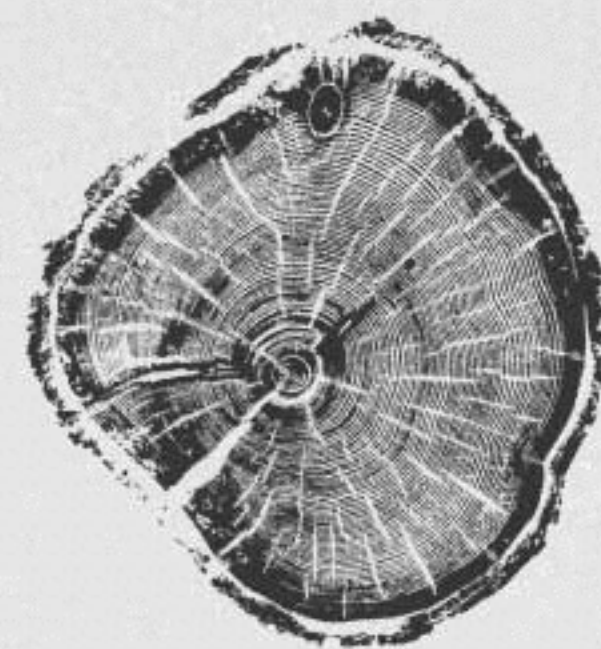


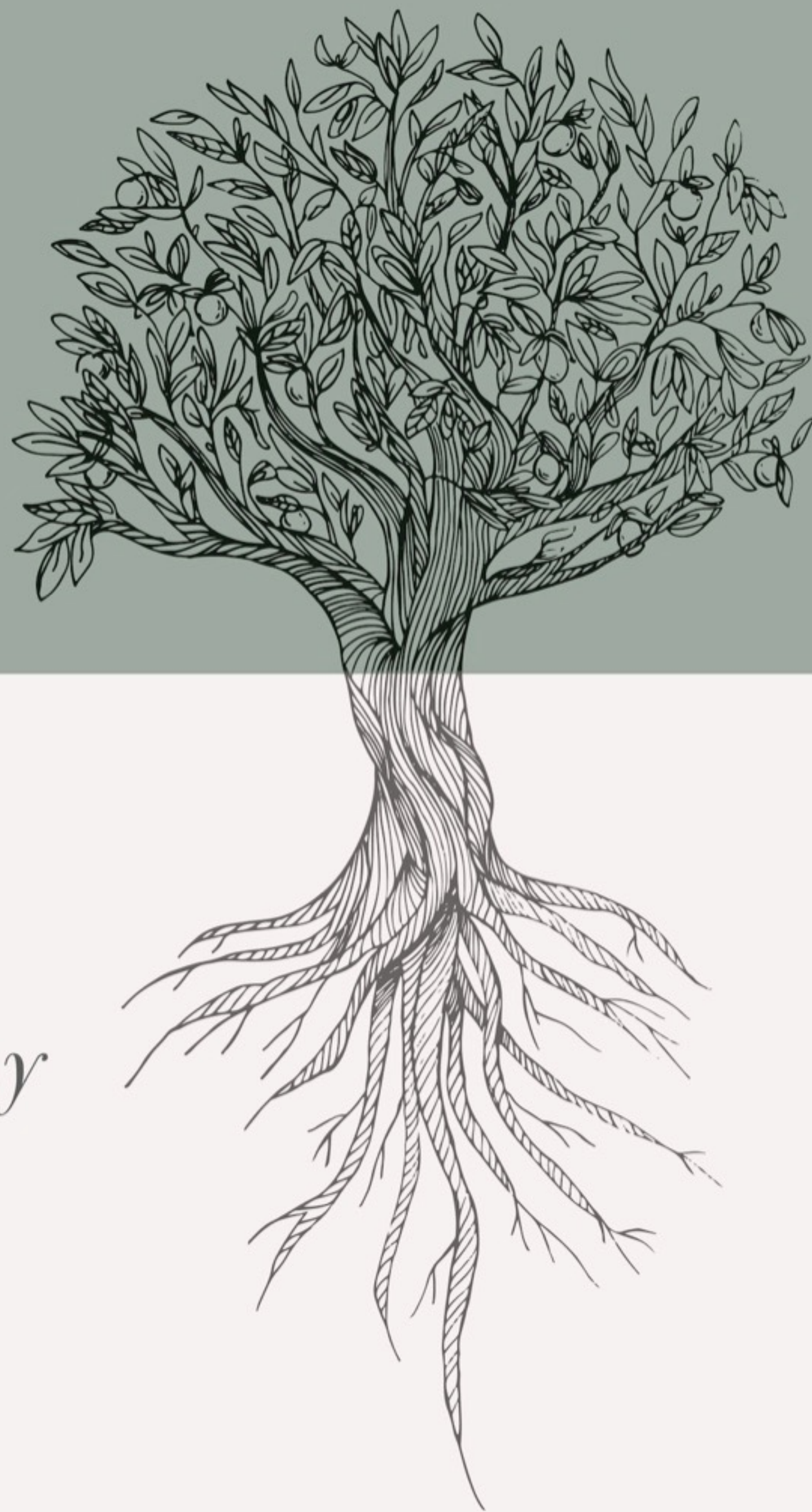
privately healthy



LIKE A TREE

PSALM 1

publicly fruitful



publicly fruitful —

— *privately healthy*

Psalm 1:1-3

Blessed is the man who walks not in the counsel of the wicked, nor stands in the way of sinners, nor sits in the seat of scoffers; but his delight is in the law of the Lord, and on his law he meditates day and night.

He is like a tree planted by streams of water that yields its fruit in its season, and its leaf does not wither. In all that he does, he prospers.

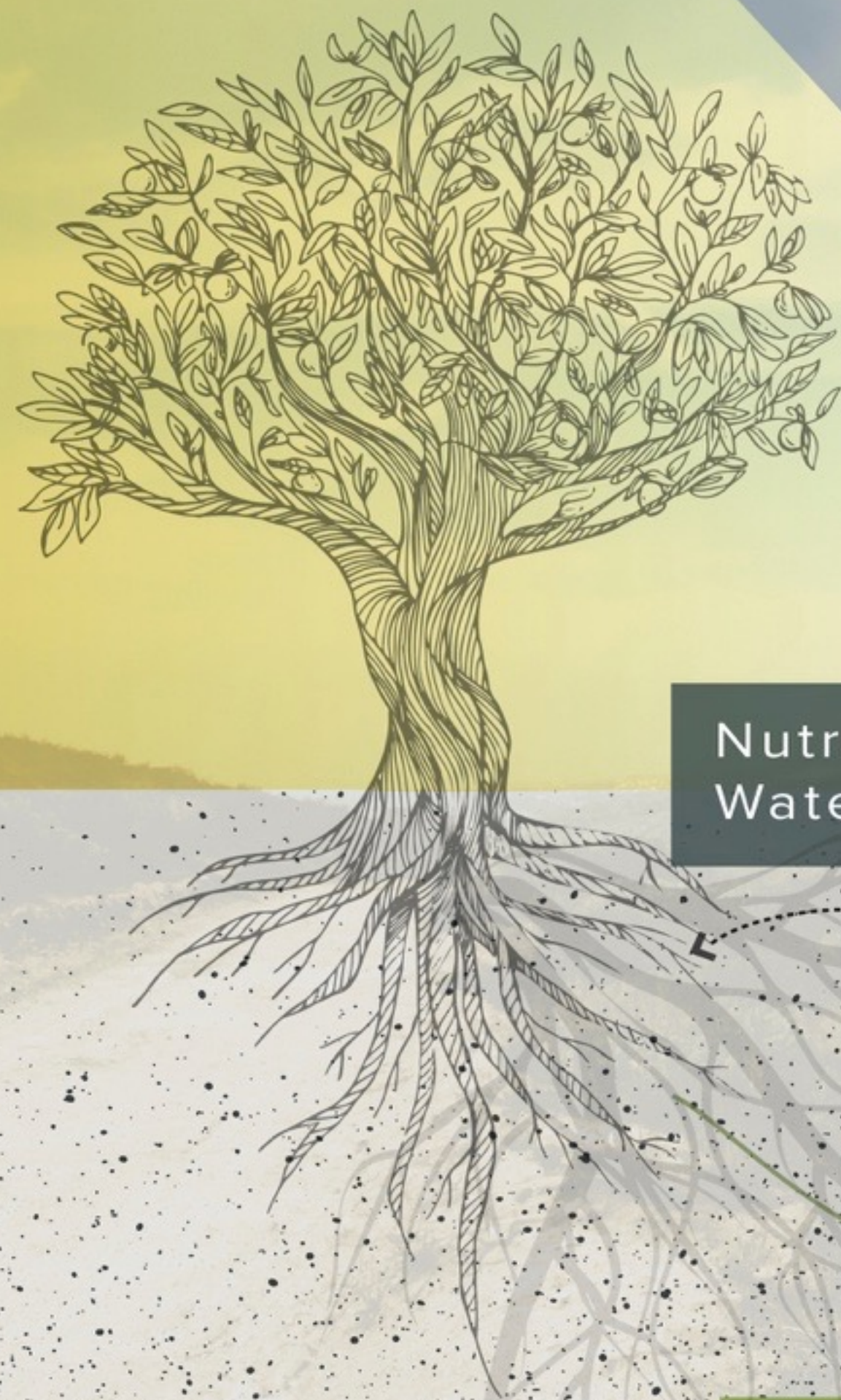


YOUR EXPANSION



Strengthen
Expand
Equip
Position

THE SERVING NETWORK OF TREES



Sunlight

Nutrients
Water

Sugar + Carbon



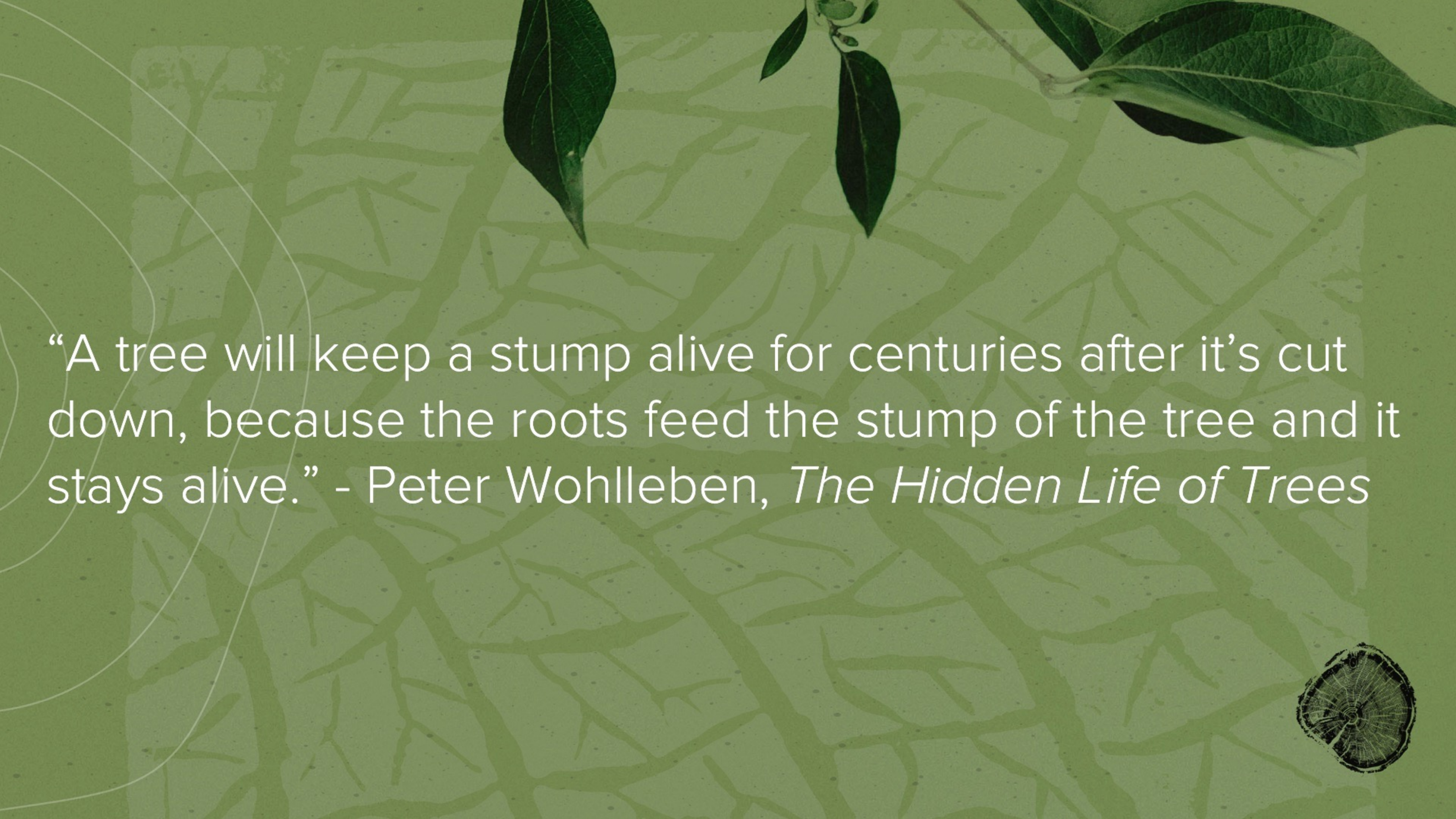
Shadow

Carbon

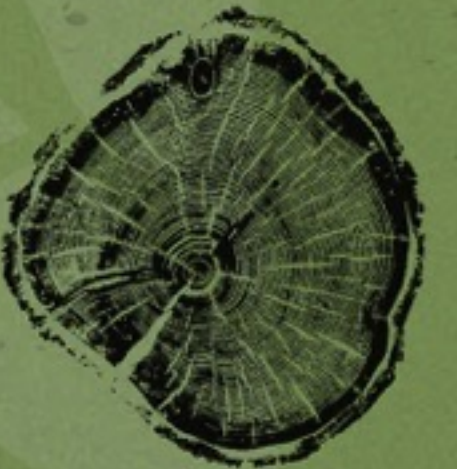
Nutrients
Water

Sugar + Carbon

Fungi

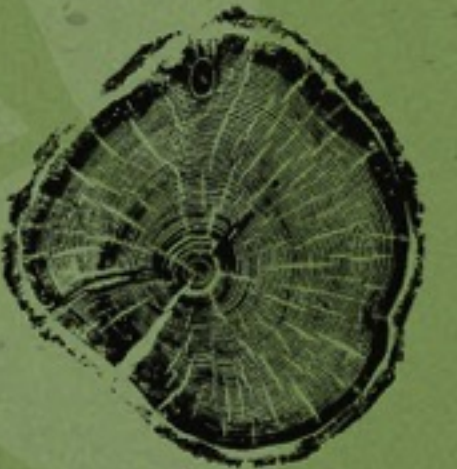


“A tree will keep a stump alive for centuries after it’s cut down, because the roots feed the stump of the tree and it stays alive.” - Peter Wohlleben, *The Hidden Life of Trees*



The Biblical Pattern of Expansion:

1. Receive
2. Grow
3. Serve

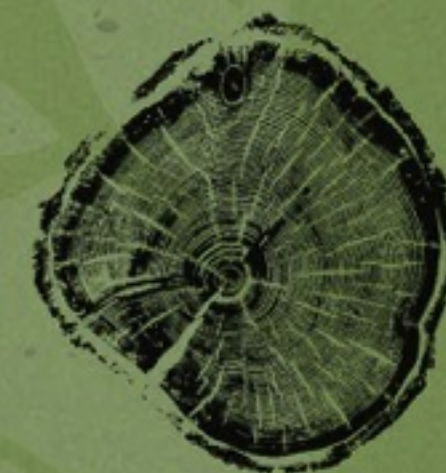


The Biblical Pattern of Expansion: Receive, Grow, Serve

John the Baptist: “A person can receive only what is given them from heaven.” - John 3:27 (NIV)

The Apostle Paul: “For I pass on to you what I received from the Lord himself.” - 1 Corinthians 11:23 (NLT)

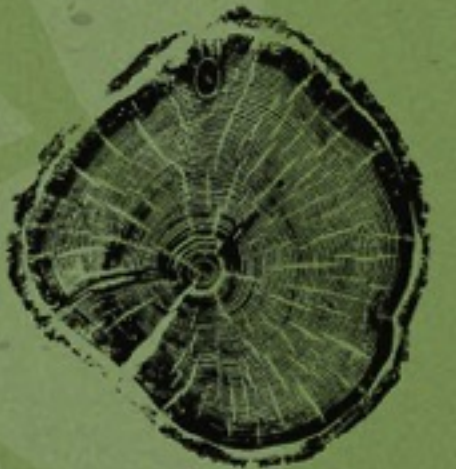
Billy Graham: “God has given you two hands; one to receive, and the other to give with.”

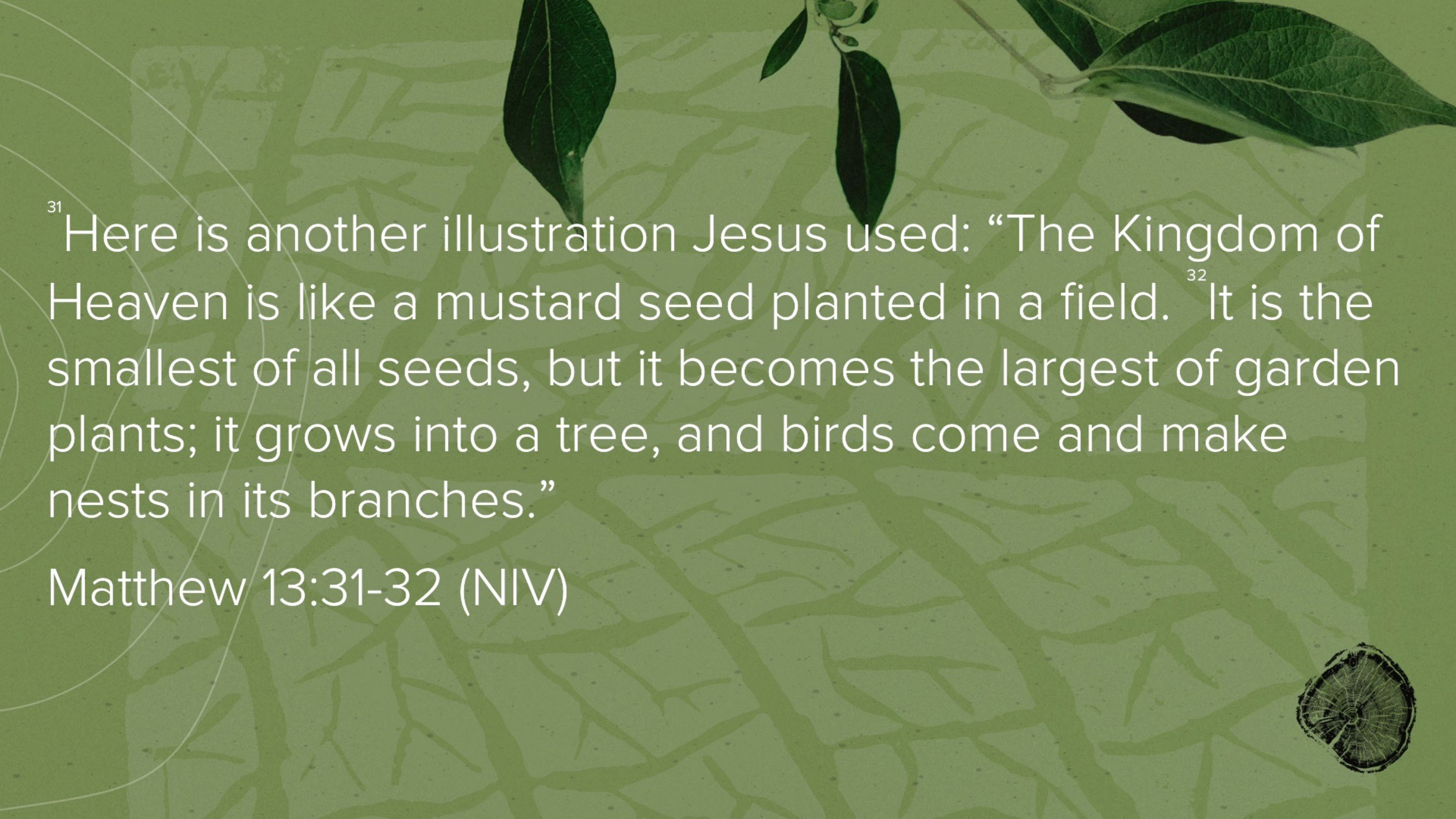


The background of the slide is a solid green color with a faint, repeating pattern of stylized green branches and leaves. In the top right corner, there are several dark green, realistic-looking leaves and branches. On the left side, there are thin, white, curved lines that sweep across the frame.

Jesus Teaches Us:

It's better to Give than to Receive when you are Privately Healthy.



The background of the slide is a dark green color with a pattern of lighter green, stylized branches and leaves. In the top right corner, there are several dark green, realistic-looking leaves. In the bottom right corner, there is a small, circular, dark brown object that looks like a cross-section of a tree trunk or a seed.

³¹ Here is another illustration Jesus used: “The Kingdom of Heaven is like a mustard seed planted in a field. ³² It is the smallest of all seeds, but it becomes the largest of garden plants; it grows into a tree, and birds come and make nests in its branches.”

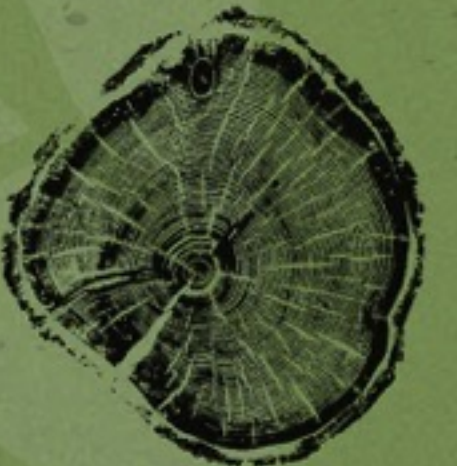
Matthew 13:31-32 (NIV)



Kingdom Expansion Begins in Private

³¹ Here is another illustration Jesus used: “The Kingdom of Heaven **is like a mustard seed planted in a field.**”

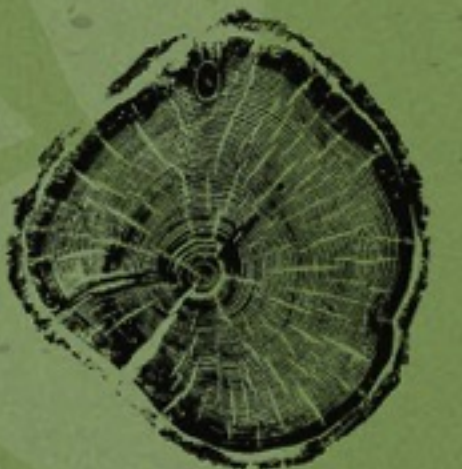
Matthew 13:31 (NIV)



Kingdom Expansion Begins in Private

The work of Expansion in our hearts will impact our:

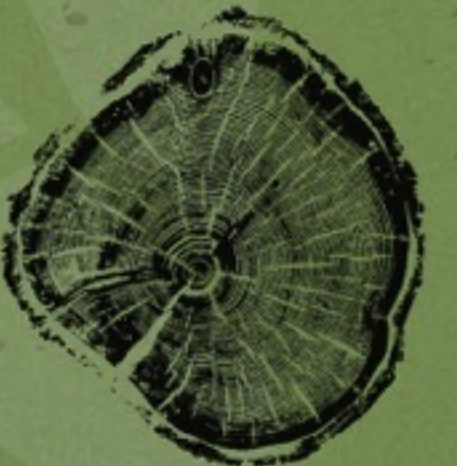
1. Tongue
2. Time
3. Wallet
4. Service
5. Outlook



Kingdom Expansion is A Cyclical Process

³² **It is the smallest of all seeds, but it becomes the largest of garden plants; it grows into a tree, and birds come and make nests in its branches.**

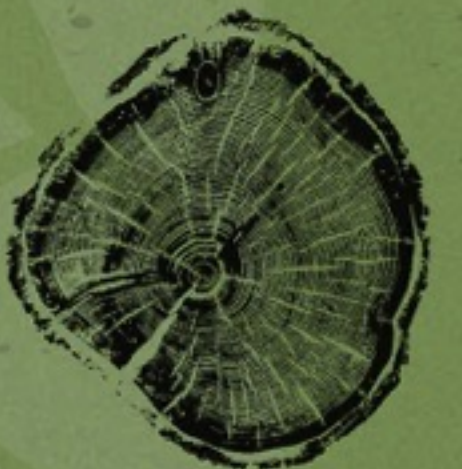
Matthew 13:32 (NIV)



Kingdom Expansion is A Cyclical Process

³⁶“May the Lord be with Solomon as he has been with you [David], my lord the king, and may he make Solomon’s reign even greater than yours!”...⁴⁷ “And all the royal officials have gone to King David and congratulated him, saying, ‘May your God make Solomon’s fame even greater than your own, and may Solomon’s reign be even greater than yours!’”

1 Kings 1:36,47 (NLT)



Kingdom Expansion is for the Purpose of Meeting the Needs of Others

³² It is the smallest of all seeds, but it becomes the largest of garden plants; it grows into a tree, and **birds come and make nests in its branches.**

Matthew 13:32 (NIV)

