

**IF +**

**THEN =**

---

the equation for blessing



**If** we put our faith in God's advice, **then** God will channel His power to **bring about** our blessing.



*IF + THEN = DIRECTION*



<sup>5</sup>Trust in the LORD with all your heart; do not depend on your own understanding. <sup>6</sup>Seek his will in all you do, and he will show you which path to take.

Proverbs 3:5-6 (NLT)



*If (We Trust God Above Ourselves)  
+ Then (God's Power) = God's Direction*



<sup>3</sup>Trust in the LORD and do good. Then you will live safely in the land and prosper. <sup>4</sup>Take delight in the LORD, and he will give you your heart's desires. <sup>5</sup>Commit everything you do to the LORD. Trust him, and he will help you. <sup>6</sup>He will make your innocence radiate like the dawn, and the justice of your cause will shine like the noonday sun.

Psalms 37:3-6 (NLT)



**Trust:** a hopeful, peaceful surrender and reliance upon God.

**Trust** is the disposition that faith takes between God's promise and fulfillment.



# GOD COUNSELS US TO TRUST HIM WHOLLY

<sup>5</sup>Trust in the LORD with **all your heart**; do not depend on your own understanding. <sup>6</sup>Seek his will in all you do, and he will show you which path to take.

Proverbs 3:5-6 (NLT)



# GOD COUNSELS US TO TRUST HIM WHOLLY

<sup>5</sup> **If any of you lacks wisdom, you should ask God**, who gives generously to all without finding fault, and it will be given to you.

<sup>6</sup> But when you ask, you must believe and not doubt, because the one who doubts is like a wave of the sea, blown and tossed by the wind. <sup>7</sup> That person should not expect to receive anything from the Lord. <sup>8</sup> **Such a person is double-minded and unstable in all they do.**

James 1:5-8 (NIV)



# GOD COUNSELS US TO TRUST HIM WHOLLY

“Pseudo-faith always arranges a way out to serve in case God fails it. Real faith knows only one way and gladly allows itself to be stripped of any second way or makeshift substitutes. For true faith, it is either God or total collapse. And not since Adam stood up on the earth has God failed a single man or woman who trusted him.”

- A.W. Tozer



# ALEXANDER THE GREAT

356-323 B.C.



- Led the Macedonian Empire into Persia, who owned the largest military force in the world at the time.
- Upon landing on their shore, Alexander quickly saw that the Persians outnumbered both their Army and Navy.
- Alexander gave the order to “burn the ships,” their only means of retreat.
- While the ships burned in the harbor, Alexander turned to his generals and said, “We leave in the Persian ships or none at all!”



# GOD COUNSELS US TO TRUST HIM SOLELY

<sup>5</sup>Trust in the LORD with all your heart; **do not depend on your own understanding.** <sup>6</sup>Seek his will in all you do, and he will show you which path to take.

Proverbs 3:5-6 (NLT)



# GOD COUNSELS US TO TRUST HIM SOLELY

## **How God Leads Us:**

1. Word Revelation (Psalm 119:105)
2. Spirit-Led Impulse (Romans 8:14)
3. Kingdom Confirmation (Romans 8:16)
4. Prophetic Encounter (1 Corinthians 12:8-10)

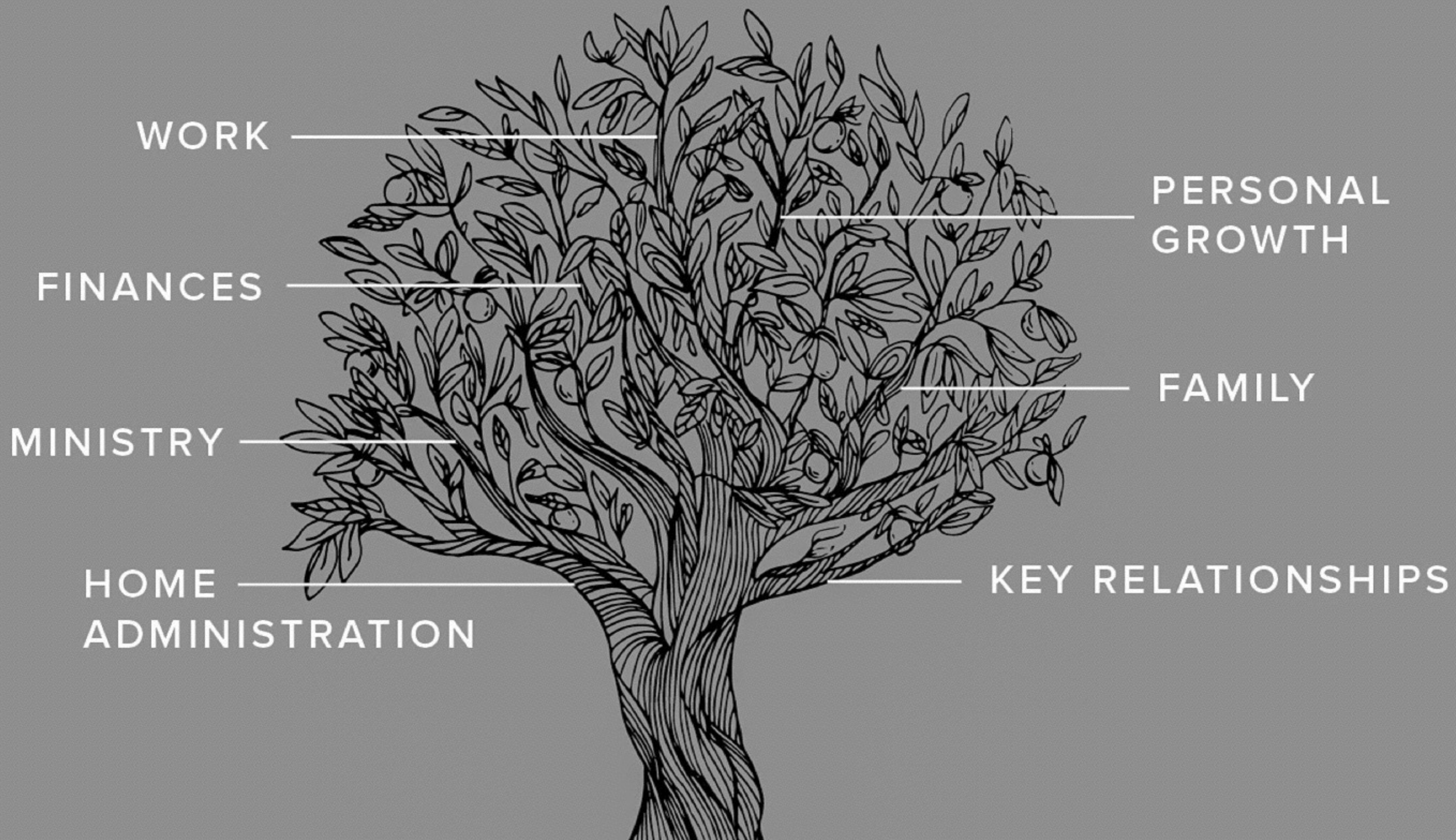


# GOD COUNSELS US TO TRUST HIM TOTALLY

<sup>5</sup>Trust in the LORD with all your heart; do not depend on your own understanding. <sup>6</sup>**Seek his will in all you do**, and he will show you which path to take.

Proverbs 3:5-6 (NLT)





WORK

PERSONAL  
GROWTH

FINANCES

FAMILY

MINISTRY

HOME  
ADMINISTRATION

KEY RELATIONSHIPS



# GOD COUNSELS US TO TRUST HIM TOTALLY

“People treat God as subjects treat a king...the large, and the moral, and the public, they will submit to his decision; but the little, and close, and kindly, they will keep to themselves.” - William Arnot