

KEEP US IN STEP

¹⁶So I say, walk by the Spirit, and you will not gratify the desires of the flesh. ¹⁷For the flesh desires what is contrary to the Spirit, and the Spirit what is contrary to the flesh. They are in conflict with each other, so that you are not to do whatever you want. ¹⁸But if you are led by the Spirit, you are not under the law. ¹⁹The acts of the flesh are obvious: sexual immorality, impurity and debauchery; ²⁰idolatry and witchcraft; hatred, discord, jealousy, fits of rage, selfish ambition, dissensions, factions ²¹and envy; drunkenness, orgies, and the like. I warn you, as I did before, that those who live like this will not inherit the kingdom of God.

Galatians 5:16-21 (NIV)

THE CONFLICT OF WALKING IN THE SPIRIT

“Just as Isaac and Ishmael were unable to get along, so the Spirit and the flesh (the old nature) are at war with each other. By ‘the flesh,’ of course, Paul does not mean ‘the body.’ The human body is not sinful; it is neutral. If the Holy Spirit controls the body, then we walk in the Spirit; but if the flesh controls the body, then we walk in the lusts (desires) of the flesh. The Spirit and the flesh have different appetites, and this is what creates the conflict.”

Warren Wiersbe

The Flesh: mere human nature, the earthly nature of man apart from divine influence; therefore prone to sin and opposed to God.

The Works of the Flesh in Galatians 5:19-21

The Sensual Sins:

Sexual immorality, Impurity, Debauchery, Drunkenness, Orgies

The Religious Sins:

Idolatry, Witchcraft

The Social Sins:

Hatred, Discord, Jealousy, Fits of Rage, Selfish Ambition,
Dissensions, Factions, Envy

The Three Beasts Representing the Levels of Hell in Dante's Inferno



Wolf: *Indulgence*



Lion: *Violence*



Leopard: *Fraud & Malice*

For whoever keeps the whole law and
yet stumbles at just one point is guilty of
breaking all of it. - *James 2:10 (NIV)*

¹Blessed is the one who does not walk in step with the wicked or stand in the way that sinners take or sit in the company of mockers, ²but whose delight is in the law of the Lord, and who meditates on his law day and night. ³That person is like a tree planted by streams of water, which yields its fruit in season and whose leaf does not wither— whatever they do prospers.

Psalms 1:1-3 (NIV)

The Realm of the Flesh

BLESSED IS THE ONE WHO DOES NOT . . .

1. WALK IN STEP WITH THE WICKED

Purpose



2. STAND IN THE WAY THAT SINNERS TAKE

Position



3. SIT IN THE COMPANY OF MOCKERS

Rest



“Sin is a blasting presence, and every fine power shrinks and withers in the destructive heat. Every spiritual delicacy succumbs to its malignant touch. Sin impairs the sight, and works toward blindness. Sin benumbs the hearing and tends to make men deaf. Sin perverts the taste, causing men to confound the sweet with the bitter, and the bitter with the sweet. Sin hardens the touch, and eventually renders a man ‘past feeling.’ Sin blocks and chokes the fine senses of the spirit; by sin we are desensitized, rendered imperceptive, and the range of our correspondence is diminished. Sin creates callousness. It hoofs the spirit, and so reduces the area of our exposure to pain.”

John Henry Jowett

Ray Kroc

Founder, McDonald's Corporation

"I believe in God, family, and McDonald's. And in the office, that order is reversed."

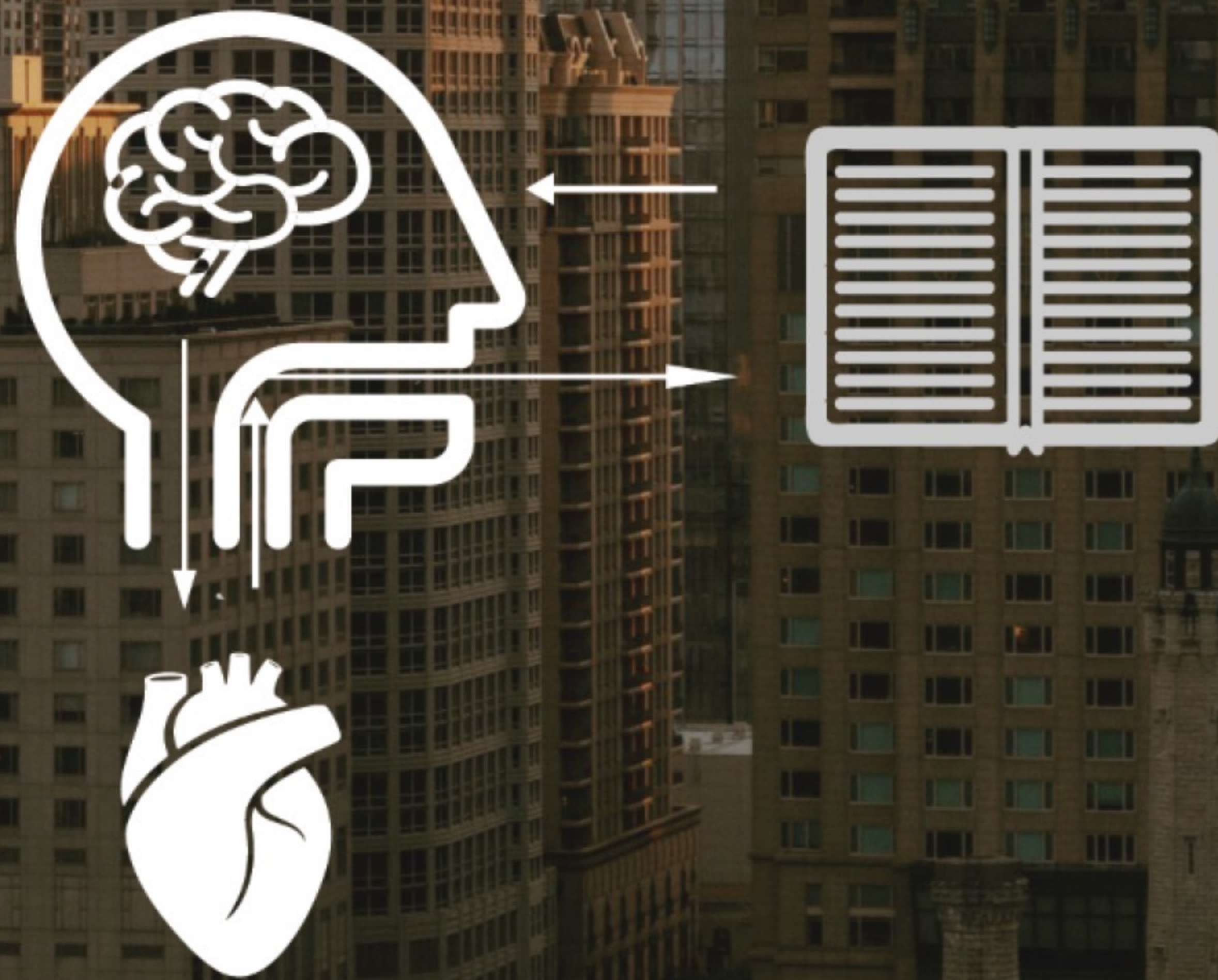


The Realm of Meditation

THE CYCLE OF MEDITATION

Blessed is the one . . . whose delight is in the law of the Lord, and who meditates on his law day and night. That person is like a tree planted by streams of water, which yields its fruit in season and whose leaf does not wither—whatever they do prospers.

Psalms 1:1-3 NIV



⁷You were running a good race. Who cut in on you to keep you from obeying the truth? ⁸That kind of persuasion does not come from the one who calls you.

Galatians 5:7-8 (NIV)

The Weed Science Society of America Hosts An Annual Agriculture Competition, “The College Weed Contest”

Agriculture programs from universities throughout the nation and Canada compete for a national championship in weed science.



“They need to be able to recognize weeds when they are tiny. When they get big enough that anybody can recognize them, it’s too late to do anything about them.”

James Worthington, President of the North Central Weed Science Society

Rembrandt

Artist, 1606-1669

“Life etches itself onto our faces as we grow older, showing our violence, excesses or kindnesses.”

Self-Portrait, 1669

